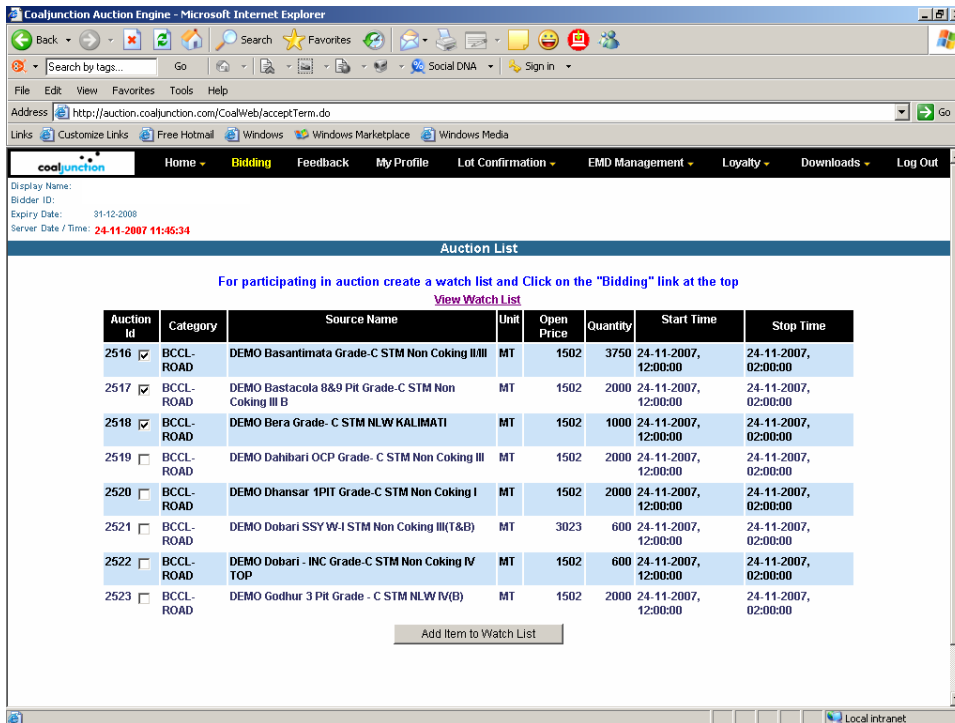


Watchlist:

Objective: Option to choose only those sources to view and bid in which bidders are interested.

How to create watchlist ?

1. After logging in and accepting the Terms and Conditions bidders are led to **Auction List** page where all the sources for which spot e-auction is to be conducted are listed down along the auction id for each lot and the start-close time.



Coaljunction Auction Engine - Microsoft Internet Explorer

Address: <http://auction.coaljunction.com/CoalWeb/acceptTerm.do>

Navigation: Home | Bidding | Feedback | My Profile | Lot Confirmation | EMD Management | Loyalty | Downloads | Log Out

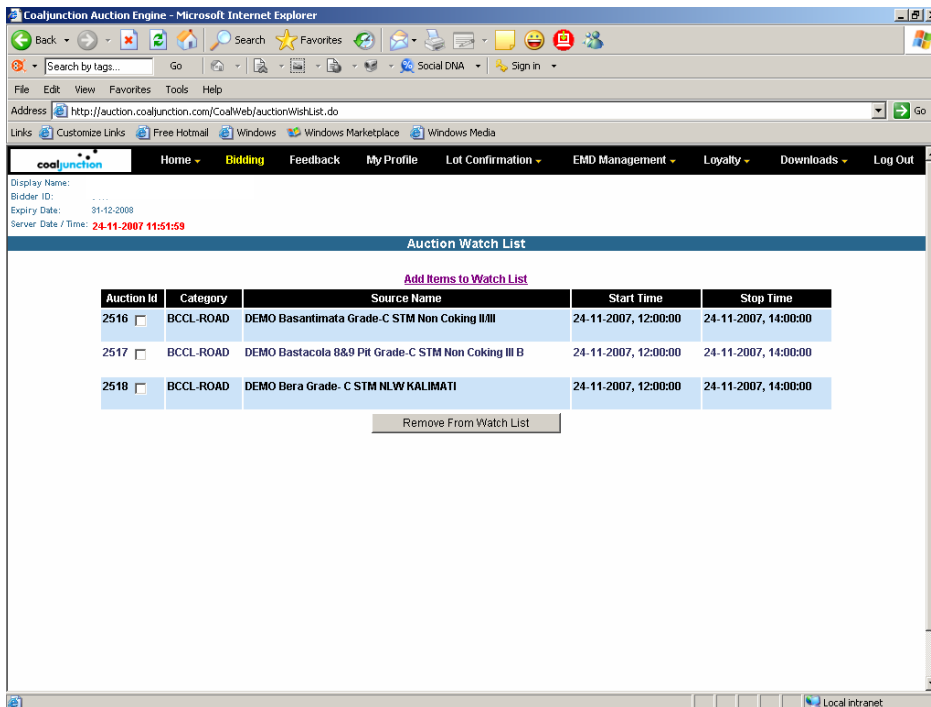
Display Name:
Bidder ID:
Expiry Date: 31-12-2008
Server Date / Time: 24-11-2007 11:46:34

Auction List

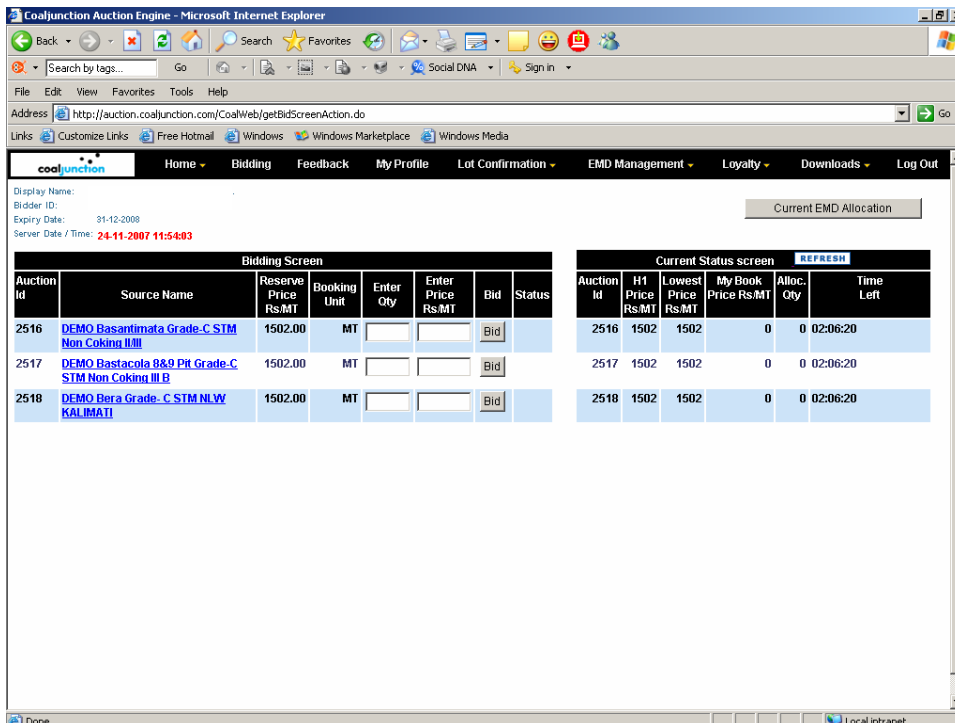
For participating in auction create a watch list and Click on the "Bidding" link at the top
[View Watch List](#)

Auction Id	Category	Source Name	Unit	Open Price	Quantity	Start Time	Stop Time
2516 <input checked="" type="checkbox"/>	BCCL-ROAD	DEMO Basantimata Grade-C STM Non Coking II/III	MT	1502	3750	24-11-2007, 12:00:00	24-11-2007, 02:00:00
2517 <input checked="" type="checkbox"/>	BCCL-ROAD	DEMO Bastacola 8&9 Pit Grade-C STM Non Coking III B	MT	1502	2000	24-11-2007, 12:00:00	24-11-2007, 02:00:00
2518 <input checked="" type="checkbox"/>	BCCL-ROAD	DEMO Bera Grade- C STM NLW KALIMATI	MT	1502	1000	24-11-2007, 12:00:00	24-11-2007, 02:00:00
2519 <input type="checkbox"/>	BCCL-ROAD	DEMO Dahibari OCP Grade- C STM Non Coking III	MT	1502	2000	24-11-2007, 12:00:00	24-11-2007, 02:00:00
2520 <input type="checkbox"/>	BCCL-ROAD	DEMO Dhansar 1PIT Grade-C STM Non Coking I	MT	1502	2000	24-11-2007, 12:00:00	24-11-2007, 02:00:00
2521 <input type="checkbox"/>	BCCL-ROAD	DEMO Dobari SSY WJ STM Non Coking III(T&B)	MT	3023	600	24-11-2007, 12:00:00	24-11-2007, 02:00:00
2522 <input type="checkbox"/>	BCCL-ROAD	DEMO Dobari - INC Grade-C STM Non Coking IV TOP	MT	1502	600	24-11-2007, 12:00:00	24-11-2007, 02:00:00
2523 <input type="checkbox"/>	BCCL-ROAD	DEMO Godhur 3 PR Grade - C STM NLW IV(B)	MT	1502	2000	24-11-2007, 12:00:00	24-11-2007, 02:00:00

- Bidders can select those lots in which they are interested by clicking on the boxes beside the Auction id and final click on Add item to Watch List. After these all the selected lots are added to the Watch List. The Screen below is visible.



- Bidders then have to click on bidding and the following screen is visible. Bidders can now start placing their bids and participate in the auction.



4. At any point in time bidders can add to their watch list by clicking on **Home** and choosing “**Add item to watch list**” or Remove items from watch list by choosing **View Watch List**.

Advantages of watch list

- Choose only those lots where bidder wants to view and bid.
- If more than 12 lots are running simultaneously then scroll bar appears, to avoid scrolling up and down bidders can use this facility by choosing only relevant lots.
- If number of chosen lots are less then the page loads and refreshes faster.